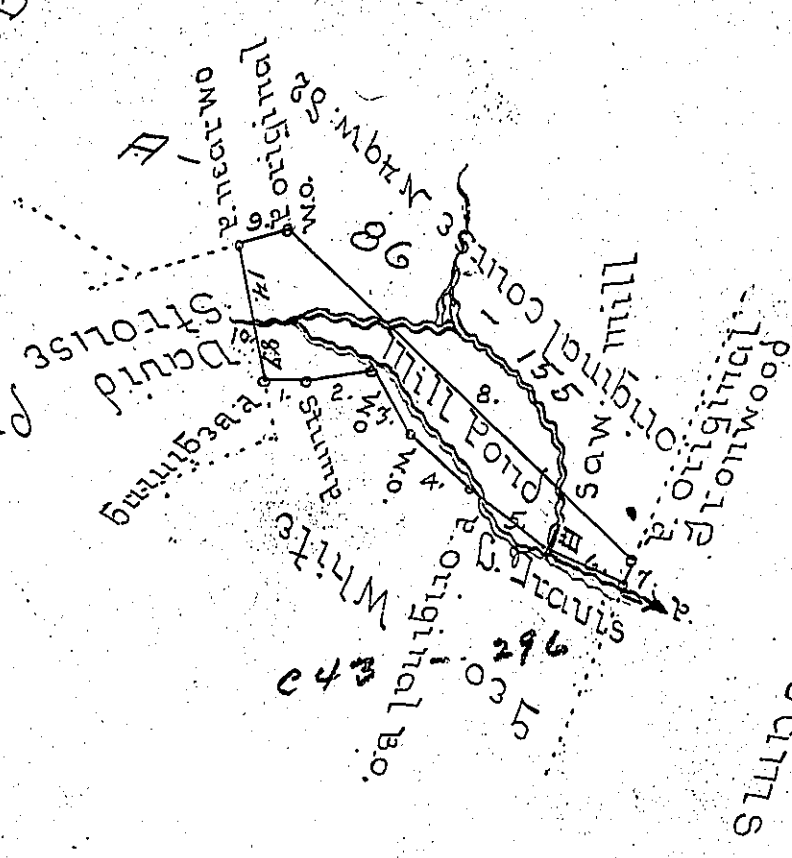




Courses & distances
Beginning at a post

- 1. - S 89 1/4 E 6.9 W. O. stump
 - 2. - N 81 1/4 E 11.3 W. O.
 - 3. - S 37 1/2 E 12.2 W. O.
 - 4. - S 77 1/2 E 15. post
 - 5. - S 55 1/2 E 17. to corner in the pond
 - 6. - S 65 E 14.5 post
 - 7. - N 17 E 3. P
 - 8. - N 77 1/2 W 82.7 P
 - 9. - S 72 1/2 W 8.1 P near W. O.
 - 10. - S 12 E 22.5 - to Beginning
- Containing 4^{as} 158^{ps} & Allowance
of six per cent

Robt Anderson



Robt Adatts

The above draught represents a lot of ground lying in Hamover Township Beaver County Pa on Little Travis bounded as above Surveyed August 22nd A.D. 1851 in pursuance of a Warrant granted to Benoni Anderson dated the 16th day of October A.D. 1848 for 6 acres 80.3 perches of improved land (The above land improved but no resident)

To the Hon. Azariah Wynn C.S.
J. Porter Brawley
Surveyor General of Penna.

IN TESTIMONY that the above is a copy of the original remaining on file in the Department of Internal Affairs of Pennsylvania, made conformably to an Act of Assembly approved the 16th day of February, 1833, I have hereunto set my Hand and caused the Seal of said Department to be affixed at Harrisburg, this first day of September 1903.

Isaac R. Brown
Secretary of Internal Affairs.